

Hello,

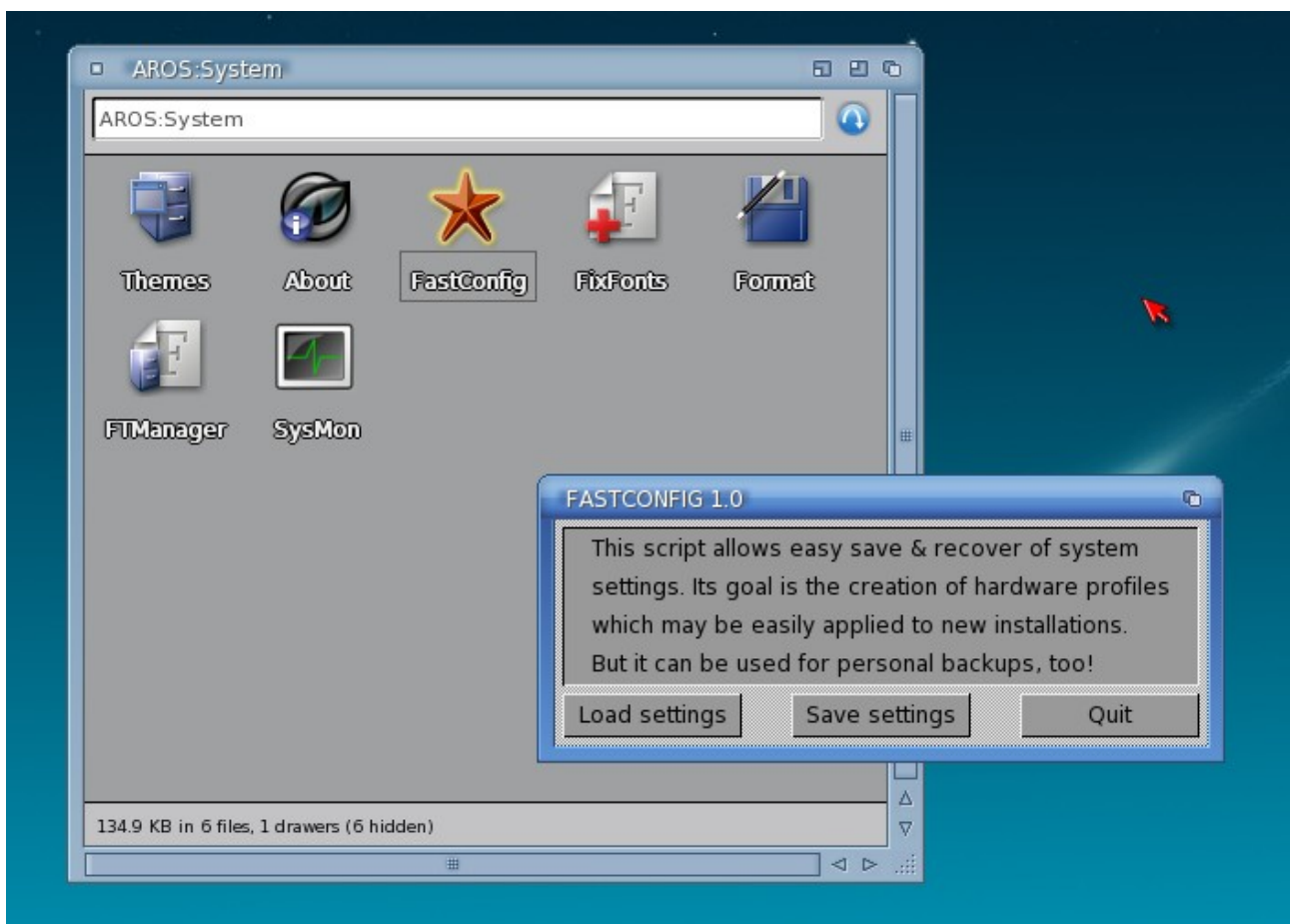
welcome to the new, awesome way of configuring Icaros Desktop. We're calling it

FastConfig

and it will make AROS system configuration fast and simple. The basics are really, really simple: since most important setting files in AROS are placed in `envarc:`, the quickest way to configure a system is just placing the right files in this drawer and reboot it. But how can we cover all the hardware out here? **With your help, obvious.**

How it works

Open your patched **Icaros Desktop 1.4.5** (updated with patch 02) and run **sys:system/FastConfig**, you will see this window:



Click on **Load Settings** and a file requester pointing to the new `sys:Storage/Config` directory will show all available systems. Select the one which fits yours and reboot. You'll find audio, network and eventually other settings already configured for you. No need to do anything else.

What's in

Default contents for config packs include:

- the AROSTCP directory
- ahi.prefs in SYS subdirectory

They are the basic settings which almost don't affect user-customizable choices, and are targeted to support hardware devices. Goal of FastConfig, in fact, is to collect settings archives (“config packs”) which may be applied with success to precise computer models. It's not targeted to custom computers like the ones we can assemble at home (even if we can still use it with them), but to brandized ones. The meaning, in a few words is something like:

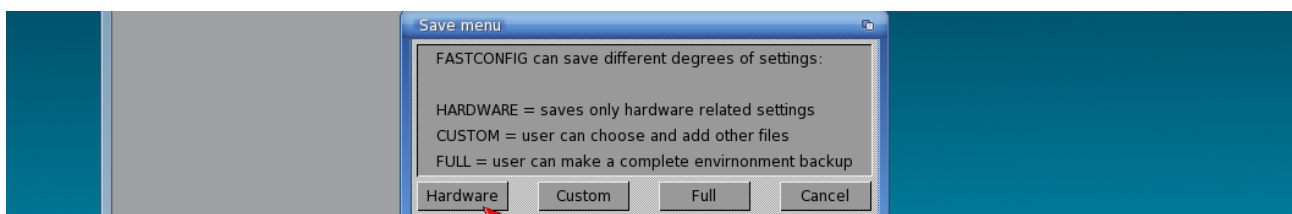
Q: “I have an Acer Aspire One A150, how should I configure AROS to run on it?”

A: “open FastConfig, click on *Load Config*, select the *ACER_AspireOne_A150.zip* file and reboot your system”

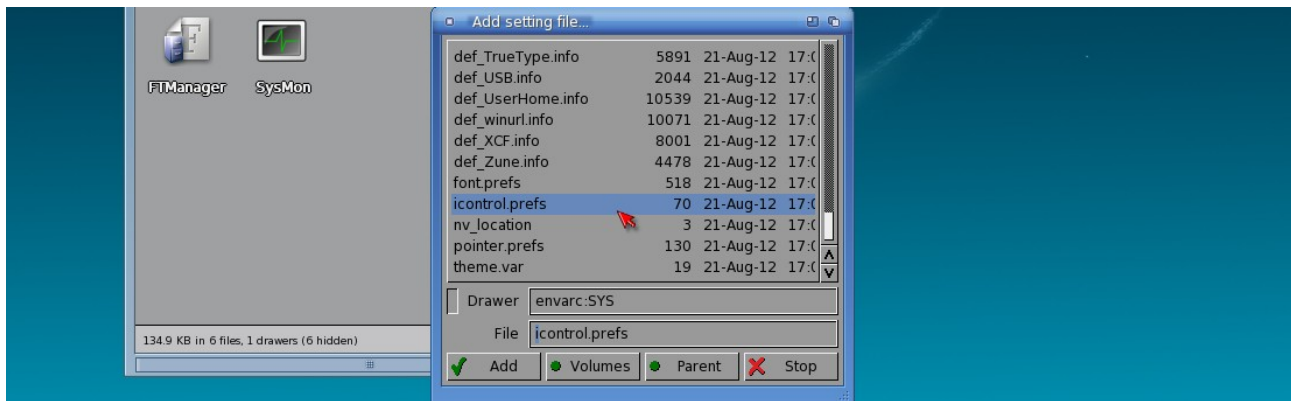
How can I contribute?

The best you can do to help this new community effort is simply backing up your system settings. How can you do that? Easy:

- 1) Make a **NEW INSTALLATION** of Icaros Desktop, keeping **default settings**
- 2) Run **AHI** prefs and setup your soundcard
- 3) Run **Network** prefs and configure your network card for **AUTOMATIC (dhcp) IP address and DNS** (other users really don't want to connect to your router...)
- 4) If you think any other setting is valuable **from the hardware point of view ONLY**, open the necessary prefs program and set it up. For instance, if a computer uses a strange pointing device which needs sticky menus to be used properly, open Icontrol and enable them
- 5) Run **FastConfig** from the **System** drawer and choose **Save Config**. You will be prompted for three different kinds of backup:



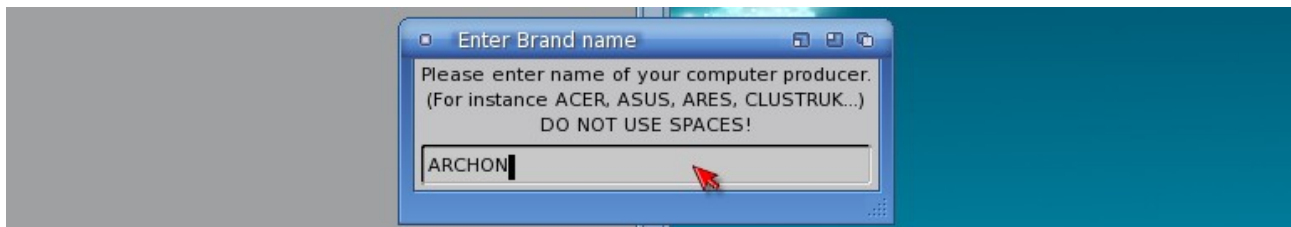
- 6) if default settings (AROSTCP+AHI) are ok, then select **Hardware** (and go to step 9). It will just save the basic hardware informations we've talked about before.
- 7) If you think (see point 4) that other settings are relevant to your system, click on **Custom**. You will be prompted for files to add:



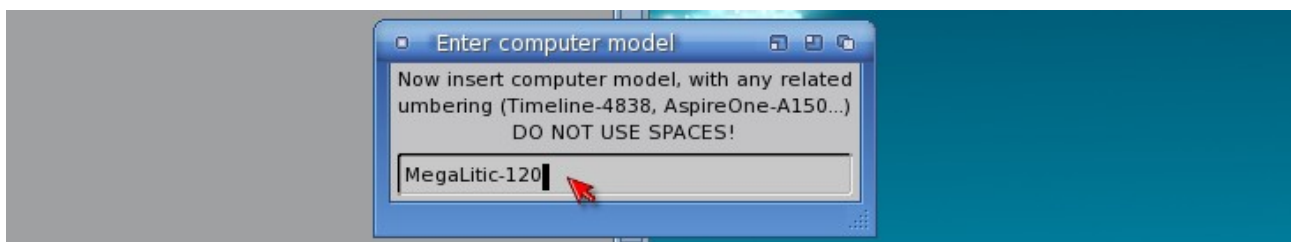
- 8) select a file and click on **Add**, you will be prompted again until you choose **Stop**.

Do not try to open Volumes or add files outside of the boundaries of Envarc: drawer, or you will be warned you can't do that, and prompted again.

- 9) If you need to include a whole directory, just **enter the directory** and click **Add**.



- 10) enter the brand and model of your system. Begin entering the hardware producer only. Please use CAPITAL LETTERS for the brand, since it makes easier to catch the eyes on them. **Do not use spaces.**



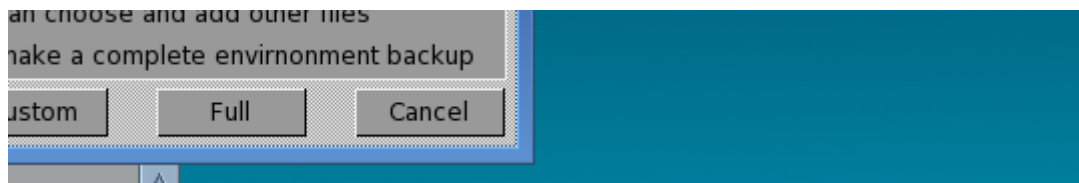
- 11) then, enter the name of the model, complete with numbering. For instance, there are dozens of ACER Aspire models out there. If your computer is a *TimeLine 4810T*, enter "*Aspire_Timeline_4810T*", without commas, with words separated by a underscore _ sign.
- 12) The resulting name will be something like "*ACER_Aspire_Timeline_4810T*" and you will be prompted to save your settings to **MyWorkspace**.
- 13) Open **SimpleMail** or **OWB**, and send me an email with your config pack in attach. Or maybe upload it on **Archives.Aros-Exec.org**, but please **inform us** anyway that a config pack for a precise computer is available somewhere. It will be added in the next releases of *Icaros Desktop*.

Some suggestions:

- if your laptop has a supported GPU, include `screenmode.prefs` after choosing the right resolution for your screen.

Use FastConfig for personal backups

You can also use FastConfig for personal backups. You can now store all settings and then forget about them: in the sad case you will be forced to restore them, you will do that in a single passage. There is, in fact, a third option for backups we haven't covered yet:



the **Full** option allows saving, in a simple passage, of ALL the settings in Envarc:, including your personal tastes for Wanderer, Zune and so on. Please notice these files may include personal informations, so do not share them unless you have a good motivation to do that.

NOTICE: the **Full** option won't ask you for brand and model of your PC. Since it is meant for personal use only, you will be free to give any name you wish to your backups.